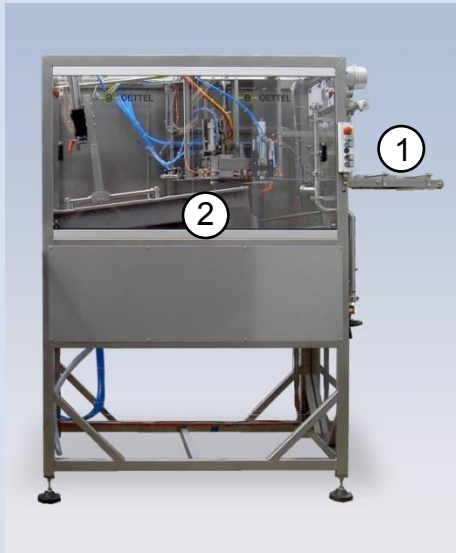


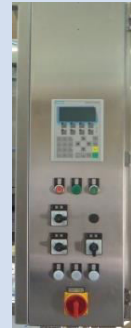
Basic equipment configuration: Filler A4001-SO



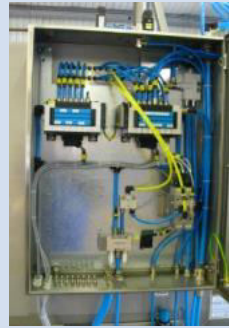
OP7



E-cabinet



Control cabinet



Pneumatic



Adjusting units



Filling chamber (2)



Bag separation



IDM



Bag infeed (1)

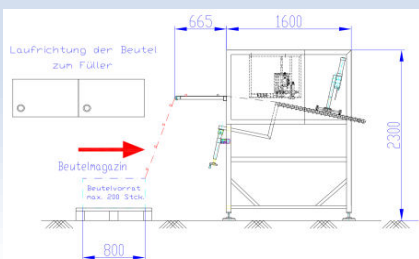


CIP-adapter

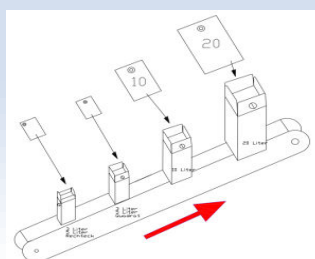
Performance:
3 litre up to 720 bags/hour
5 litre up to 600 bags/hour
10 litre up to 480 bags/hour

Technical Data
Filling range: 3 ... 20 litres
Compressed air pressure: 6 bar (Festo-components)
Voltage/power: 400V (50Hz)/ 25A
Control voltage: 24V

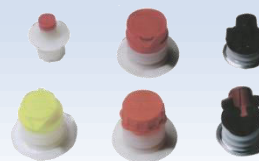
- Can be used to process nearly all liquids
- Robust stainless steel construction
- High-quality equipment components (Siemens, Festo, SEW)
- Good operability
- Maintenance friendly design allowing good accessibility
- Pre-settable program modes (CIP, forward running, production, maintenance)
- Exact machine set-up via the hand wheel
- High operational availability through precise component processing
- Pre-programmed filling quantities via selection switch on operating box
- Remote maintenance via modem
- The machine conforms to EC Machinery Directive 2006/42/EC



Dimensions L/B/H: 2500/1250/2300



Cartons for 3, 5, 10 und 20 litres



Standard Sealing Systems



Tap